

RESIDUAL AREA 1 LINE TABLE					
Line #	Direction	Length	Line #	Direction	Length
L1	N22°00'59"E	531.38	L13	N68°28'56"W	235.43
L2	S72°59'51"E	477.15	L14	N38°09'30"W	174.29
L3	S72°53'25"E	763.19	L15	N42°08'28"W	216.55
L4	S17°06'35"W	149.70	L16	N78°06'02"W	15.38
L5	N72°45'38"W	386.79	L17	S47°51'32"W	87.77
L6	S17°14'23"W	103.10	L18	S24°44'19"W	24.59
L7	S17°14'19"W	55.00	L19	N65°15'41"W	201.13
L8	S72°45'41"E	10.00	L20	N26°47'49"W	54.46
L9	S17°14'19"W	23.85	L21	N45°33'54"W	71.05
L10	S15°13'35"E	289.16	L22	N67°59'01"W	54.53
L11	S21°31'04"W	14.50	L23	S22°00'59"W	172.89
L12	S84°14'23"W	11.46			

AREA 2 LINE TABLE		
Line #	Direction	Length
L54	N17°06'35"E	149.70
L55	S72°53'25"E	667.64
L56	S17°09'22"W	33.00
L57	S72°50'38"E	230.79
L58	S17°09'22"W	188.50
L59	N65°34'28"W	559.24
L60	N72°45'41"W	343.56

RESIDUAL PARCEL 2 AREA 3 LINE TABLE		
Line #	Direction	Length
L61	N66°50'02"W	25.00
L62	N83°26'21"W	130.00
L63	N06°33'39"E	220.12
L64	N24°25'33"E	46.29
L65	S65°34'27"E	10.00
L66	N24°25'33"E	55.00
L67	N13°52'15"E	104.87
L68	N17°09'22"E	188.50
L69	S72°50'38"E	160.04
L70	S17°12'47"W	75.00
L71	S72°47'13"E	151.88
L72	S16°25'45"W	55.17
L73	S72°47'13"E	135.01
L74	S16°25'45"W	58.23
L75	S15°29'56"W	324.08
L76	N86°27'28"W	98.04

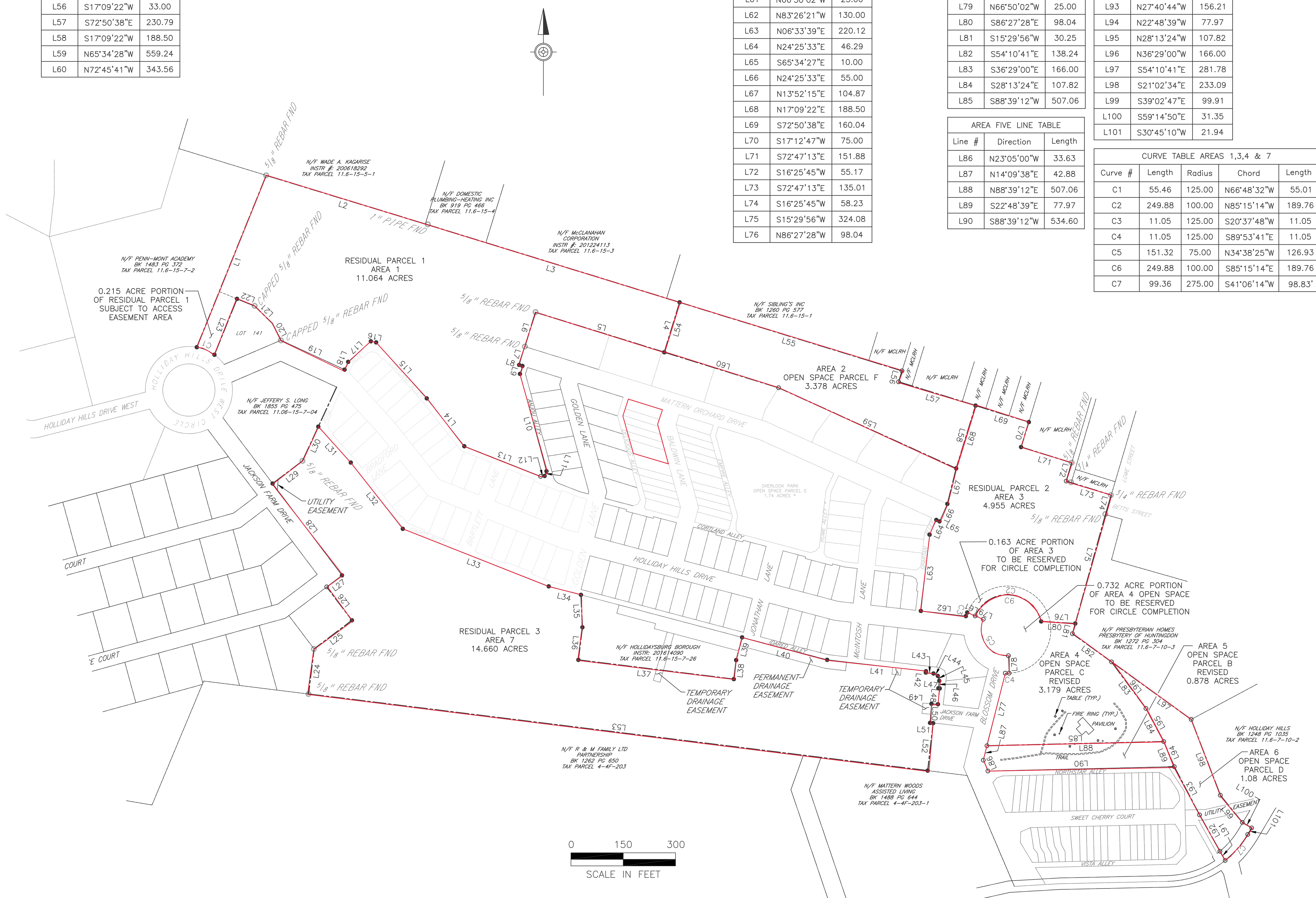
AREA 4 LINE TABLE		
Line #	Direction	Length
L77	N14°09'38"E	214.52
L78	N02°26'27"W	50.00
L79	N66°50'02"W	25.00
L80	S86°27'28"E	98.04
L81	S15°29'56"W	30.25
L82	S54°10'41"E	138.24
L83	S36°29'00"E	166.00
L84	S28°13'24"E	107.82
L85	S88°39'12"W	507.06

ARE 6 LINE TABLE		
Line #	Direction	Length
L91	N29°18'25"W	30.44
L92	N29°18'25"W	119.49
L93	N27°40'44"W	156.21
L94	N22°48'39"W	77.97
L95	N28°13'24"W	107.82
L96	N36°29'00"W	166.00
L97	S54°10'41"E	281.78
L98	S21°02'34"E	233.09
L99	S39°02'47"E	99.91
L100	S59°14'50"E	31.35
L101	S30°45'10"W	21.94

AREA FIVE LINE TABLE		
Line #	Direction	Length
L86	N23°05'00"W	33.63
L87	N14°09'38"E	42.88
L88	N88°39'12"E	507.06
L89	S22°48'39"E	77.97
L90	S88°39'12"W	534.60

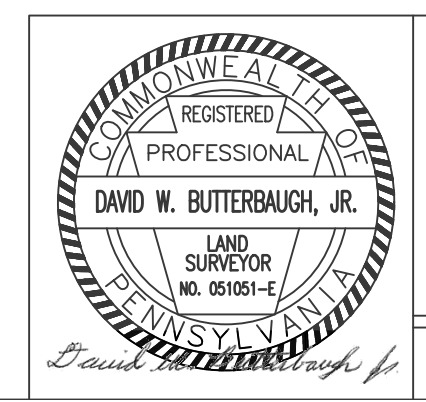
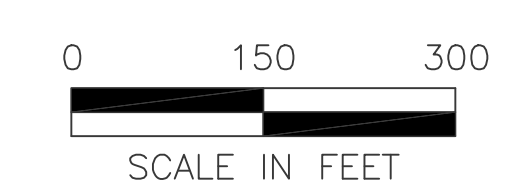
CURVE TABLE AREAS 1,3,4 & 7				
Curve #	Length	Radius	Chord	Length
C1	55.46	125.00	N66°48'32"W	55.01
C2	249.88	100.00	N85°15'14"W	189.76
C3	11.05	125.00	S20°37'48"W	11.05
C4	11.05	125.00	S89°53'41"E	11.05
C5	151.32	75.00	N34°38'25"W	126.93
C6	249.88	100.00	S85°15'14"E	189.76
C7	99.36	275.00	S41°06'14"W	98.83'

RESIDUAL PARCEL 3 LINE TABLE					
Line #	Direction	Length	Line #	Direction	Length
L24	N07°03'07"E	130.20	L39	N14°46'25"E	67.31
L25	N52°54'41"E	136.10	L40	S75°13'35"E	252.19
L26	N37°05'19"W	120.00	L41	S83°26'21"E	285.33
L27	N52°54'41"E	55.00	L42	S06°33'39"W	4.00
L28	N37°05'19"W	330.00	L43	S83°26'21"E	22.14
L29	N52°54'41"E	107.50	L44	S60°12'23"E	14.36
L30	N24°44'19"E	108.20	L45	S16°39'59"E	14.36
L31	S42°08'28"E	138.74	L46	S06°33'39"W	21.64
L32	S38°09'30"E	241.61	L47	S83°26'21"E	4.00
L33	S68°28'56"E	449.92	L48	S06°33'39"W	45.76
L34	S75°13'35"E	95.67	L49	N85°37'34"W	18.64
L35	S02°32'44"E	93.05	L50	S04°22'25"W	55.00
L36	S07°03'07"W	94.20	L51	S85°37'36"E	9.03
L37	S82°56'53"E	449.22	L52	S06°33'39"W	137.10
L38	N07°03'07"E	55.00	L53	N82°56'53"W	1789.63



LEGEND

- PROPERTY LINE ————
- APPROXIMATE ADJOINER LINE - - - - -
- 5/8" REBAR SET (UNLESS OTHERWISE NOTED) ●
- IRON PIN/PIPE FOUND (AS NOTED) ○



P. JOSEPH LEHMAN, INC.
CONSULTING ENGINEERS
HOLLIDAYSBURG, PENNSYLVANIA

PROJECT NO. 5730 DATE: 1-15-2021

DATE	NO.	REVISION

DRAFT SHOWING REMAINING LANDS OF
HOLLIDAYS DEVELOPMENT
RESIDUAL PARCELS 1, 2 AND 3
HOLLIDAYSBURG BOROUGH
BLAIR COUNTY, PENNSYLVANIA